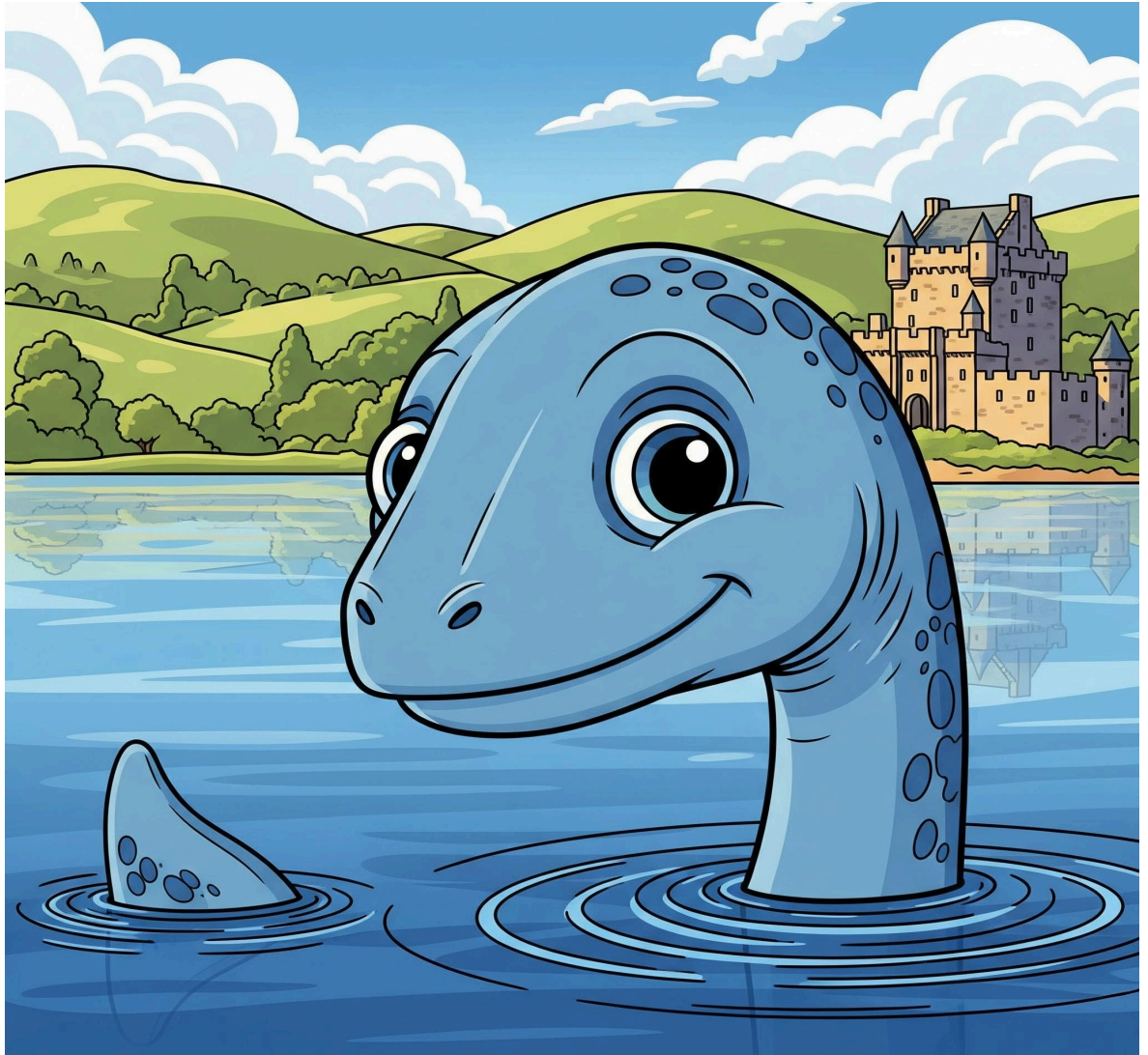


Phoenix Education Foundation
Come Soar With Us!



CAMPUS SCHEDULE
GRADES 1-6
2026-2027

TABLE OF CONTENTS

<i>From the Foundation</i>	4
<i>Who We are</i>	5
<i>Educational Options</i>	6
<i>How Mondays Work</i>	9
<i>How Tuesdays and Thursdays Work</i>	10
<i>How Fridays Work</i>	12
<i>How Fun Days Work</i>	12
<i>How Foundation Workshops Work</i>	13
<i>How Show & Shares Work</i>	14
<i>How Food & Supervision Works</i>	15
<i>How Placement Works</i>	16
<i>How Orientation Week Works</i>	16
<i>How Parent Support Works</i>	16
Scotland Theme	17
<i>Fall Camps</i>	20
Ancient Greece Theme	21
<i>New Year's Camps</i>	24
First Peoples Theme	25
<i>Spring Camps</i>	28
Disasters and Resilience Theme	29
<i>Outdoor Weeks</i>	32
<i>Going to Workshops</i>	32
<i>If there is a Problem</i>	34
<i>Onsite Procedures</i>	35

Important Notes

This guide covers the classes and events that will be offered in this school year for Grades 1-6 students and their families.

Our website:

phoenixfoundation.ca

Our mobile learning app:

phoenix.schoology.com

Our Facebook page:

<https://www.facebook.com/PhoenixFoundationCalgary>

Important Dates

Registration for returning students - March 2

Registration for new students - April 1

EVERYONE may register for open class spots August 17

Please make sure you check your email regularly. We send out weekly updates.

** Please note: Program details are subject to change. The world is a dynamic place and we cannot control a great many factors such as weather, illness, or natural events. We will do our best to keep you informed of the latest information via our weekly update. It is your responsibility to check your email and read the update. If you are not receiving it, please notify us immediately!!*

2026-2027 Phoenix Calendar

September							October							November						
Su	Mo	Tu	We	Th	Fr	Sa	Su	Mo	Tu	We	Th	Fr	Sa	Su	Mo	Tu	We	Th	Fr	Sa
		1	2	3	4	5					1	2	3	1	2	3	4	5	6	7
6	7	8	9	10	11	12	4	5	6	7	8	9	10	8	9	10	11	12	13	14
13	14	15	16	17	18	19	11	12	13	14	15	16	17	15	16	17	18	19	20	21
20	21	22	23	24	25	26	18	19	20	21	22	23	24	22	23	24	25	26	27	28
27	28	29	30				25	26	27	28	29	30	31	29	30					
December							January							February						
Su	Mo	Tu	We	Th	Fr	Sa	Su	Mo	Tu	We	Th	Fr	Sa	Su	Mo	Tu	We	Th	Fr	Sa
		1	2	3	4	5						1	2	31	1	2	3	4	5	6
6	7	8	9	10	11	12	3	4	5	6	7	8	9	7	8	9	10	11	12	13
13	14	15	16	17	18	19	10	11	12	13	14	15	16	14	15	16	17	18	19	20
20	21	22	23	24	25	26	17	18	19	20	21	22	23	21	22	23	24	25	26	27
27	28	29	30	31			24	25	26	27	28	29	30	28						
March							April							May						
Su	Mo	Tu	We	Th	Fr	Sa	Su	Mo	Tu	We	Th	Fr	Sa	Su	Mo	Tu	We	Th	Fr	Sa
	1	2	3	4	5	6					1	2	3							1
7	8	9	10	11	12	13	4	5	6	7	8	9	10	2	3	4	5	6	7	8
14	15	16	17	18	19	20	11	12	13	14	15	16	17	9	10	11	12	13	14	15
21	22	23	24	25	26	27	18	19	20	21	22	23	24	16	17	18	19	20	21	22
28	29	30	31				25	26	27	28	29	30		23	24	25	26	27	28	29
June							July							August 2026						
Su	Mo	Tu	We	Th	Fr	Sa	Su	Mo	Tu	We	Th	Fr	Sa	Su	Mo	Tu	We	Th	Fr	Sa
30	31	1	2	3	4	5					1	2	3	2	3	4	5	6	7	8
6	7	8	9	10	11	12	4	5	6	7	8	9	10	9	10	11	12	13	14	15
13	14	15	16	17	18	19	11	12	13	14	15	16	17	16	17	18	19	20	21	22
20	21	22	23	24	25	26	18	19	20	21	22	23	24	23	24	25	26	27	28	29
27	28	29	30				25	26	27	28	29	30	31	30	31					

Sept 7	Labour Day	Nov 11	Remembrance Day	Jan 1	New Year's Day	May 24	Victoria Day
Sep 30	Truth and Rec (Open)	Dec 25	Christmas Day	Feb 15	Family Day	Jul 1	Canada Day
Oct 12	Thanksgiving	Dec 26	Boxing Day	Mar 26	Good Friday	Aug 3	Heritage Day

Closed for Breaks: Oct 19-23, Dec 21-Jan 1, April 12-16, June 28-Jul 30

Themes	Camps / Orientations	Ketchup Week	Holidays	Staff Meeting	Speciality Days	Board Meeting
--------	----------------------	--------------	----------	---------------	-----------------	---------------

Number of Days								
Month	Op	Incl	Month	Op	Incl	Month	Op	Incl
Sep	21	20	Jan	20	20	May	20	19.5
Oct	16	15.5	Feb	19	18.5	June	19	14
Nov	20	19.5	Mar	22	22	July	0	0
Dec	14	14	April	17	16.5	Aug	21	6
	71	69		78	77		60	39.5

Operational Days - 209 Instructional Days - 185.5
 Open - 9-4 PM Monday to Friday 403-265-7701
 Teachers take 30 mins for lunch. We do not have recess which means our teachers are available for instruction 6.5 hours per day for a total of 185.5 days X 6.5 = 1206 hours per year.

REVIEWED

FROM THE FOUNDATION



Welcome

We love learning! We love helping families learn and grow! Our school values reflect our love of learning!

There are **7 values** upon which the school was built. They are:

- **Community** - Phoenix is not only a community of learners but also creates community through shared space, time and intention!
- **Kinship (Family)** - We support family! Over the years, the concept of family has changed and is more inclusive. We thought the word kinship was more inclusive as it includes those not only related by blood but also affiliation.
- **Experiential Learning** - Hands-on , messy learning!
- **Sassy** - Yup, we are often a little sassy and try not to take ourselves too seriously!
- **Life-Long Learning** - We are all learning and continue to learn each and every day.
- **Frugal** - We operate on a cost-recovery basis. We are a non-profit school.
- **Nimble (Flexible)** - Yes, that means we can change quickly if we need to and we can touch our toes!



*Kind Regards,
Mrs. Diana Stinn, Co-Founder
Head of School*

Welcome to a Year of Discovery!

Our Elementary program is built on the power of curiosity. By blending hands-on play with purposeful exploration, we empower our students to take charge of their learning journey. I look forward to watching them transform their wonder into wisdom as the brave leaders of our future!

Tim Gordon Inspiring Educational Leader – Principal

WHO WE ARE



The **Phoenix Education Foundation** is a publicly accredited and funded, non-profit, private Alberta school that specializes in personalized learning. To learn more about how private schools are funded and accountable go to : <https://phoenixfoundation.ca/2016/12/16/how-private-schools-work/>

We offer the following five program choices:

- 1) **Preschool**
- 2) **Kindergarten**
- 3) **BlendEd**
- 4) **Online**
- 5) **Home Education**

All of our programs require a significant commitment from parents. Students must have an engaged adult who is available daily to assist, support, transport and coordinate learning activities for the student.

Phoenix is a secular school and celebrates a variety of commercial holidays! We respect diversity and parents' right to choice!

Phoenix is not a designated special needs school and as such we cannot accommodate severe special needs students. Due to limited funding and resources, we are **unable** to accommodate...

- Students with behavioral challenges, oppositional defiance or a history of aggression or physical violence.
- Students who require 1:1 aides, nursing staff or special intervention equipment or providers (unless providing your own).
- Students who may be a flight risk or danger to themselves or others.



Our mission is to provide unique learning opportunities for families so that each young person may develop into a lifelong learner and active responsible global citizen.

Each educational program is customized to suit your child's specific needs, learning styles and the environment.

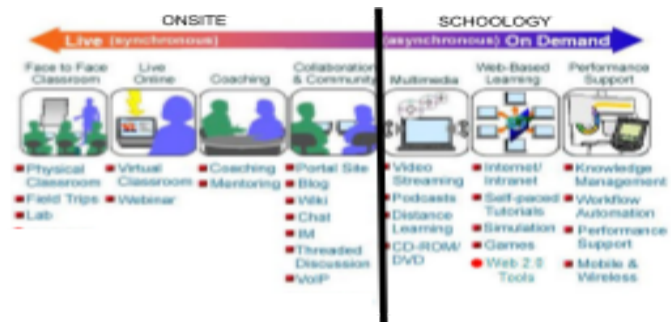
WE ARE OPEN TO ALL!

EDUCATIONAL OPTIONS SUMMARY GR. K-6



Kindergarten (K) – Open to children who are 4 years and 8 months old on September 1 of each year. Consists of a minimum of 475 hours of programming including music, art, literacy and field trips. Field trip, food or cultural fees may be charged if applicable. Families receive ~\$720** towards transportation. This is an onsite program and regular attendance is required.

BlendEd (Gr. 1-9) - Our “BlendEd” program uses our learning management system (Schoolology), along with great resources, onsite small group classes, field trips and school-based activities for 950-1000 hours for Grades 1-9. This hybrid program follows the Alberta Program of Studies (APS) in all subject areas. An Alberta certificated teacher called a Teacher develops the instructional path, delivers the learning opportunities, coaches and assesses your student.



Parents must be highly engaged partners in this learning path and it is truly a collaborative effort between the home and the school, combining the strengths of parent-student, student-teacher, and parent-teacher interaction. The degree to which parents are engaged in learning partnerships varies with the age of the student, the learning needs and the grade level.

This program includes all the core resources, classes, field trips, activities, testing, support etc. needed for completion of the basic instructional pathway. Transportation Grant may be available (\$504**)

Online (Gr. 1-6) - This program is suited to students who cannot make it into Phoenix on a regular basis. Just like the BlendEd program, all the resources are provided, including some field trips. A Phoenix teacher still develops the instructional path, delivers the learning opportunities, coaches and assesses your student. The primary difference between the two programs is that all of the programs are provided online and instead of onsite classes and workshops, students “see teachers” online through conference sessions. There may be some in-person meetings required for assessment.

Home Education (Gr. K-9) – In a Home Education program, the parent designs, implements and evaluates the program. A Phoenix teacher reports on the progress of the program. Minimum 2 parent/student/teacher meetings each year. Portfolio required. Resource funding allotment is ~\$901* Please see our handbook for what kinds of items can be reimbursed.

* Resource allotment depends on Alberta Education and is subject to change (\$450.50 for kindergarten home education)

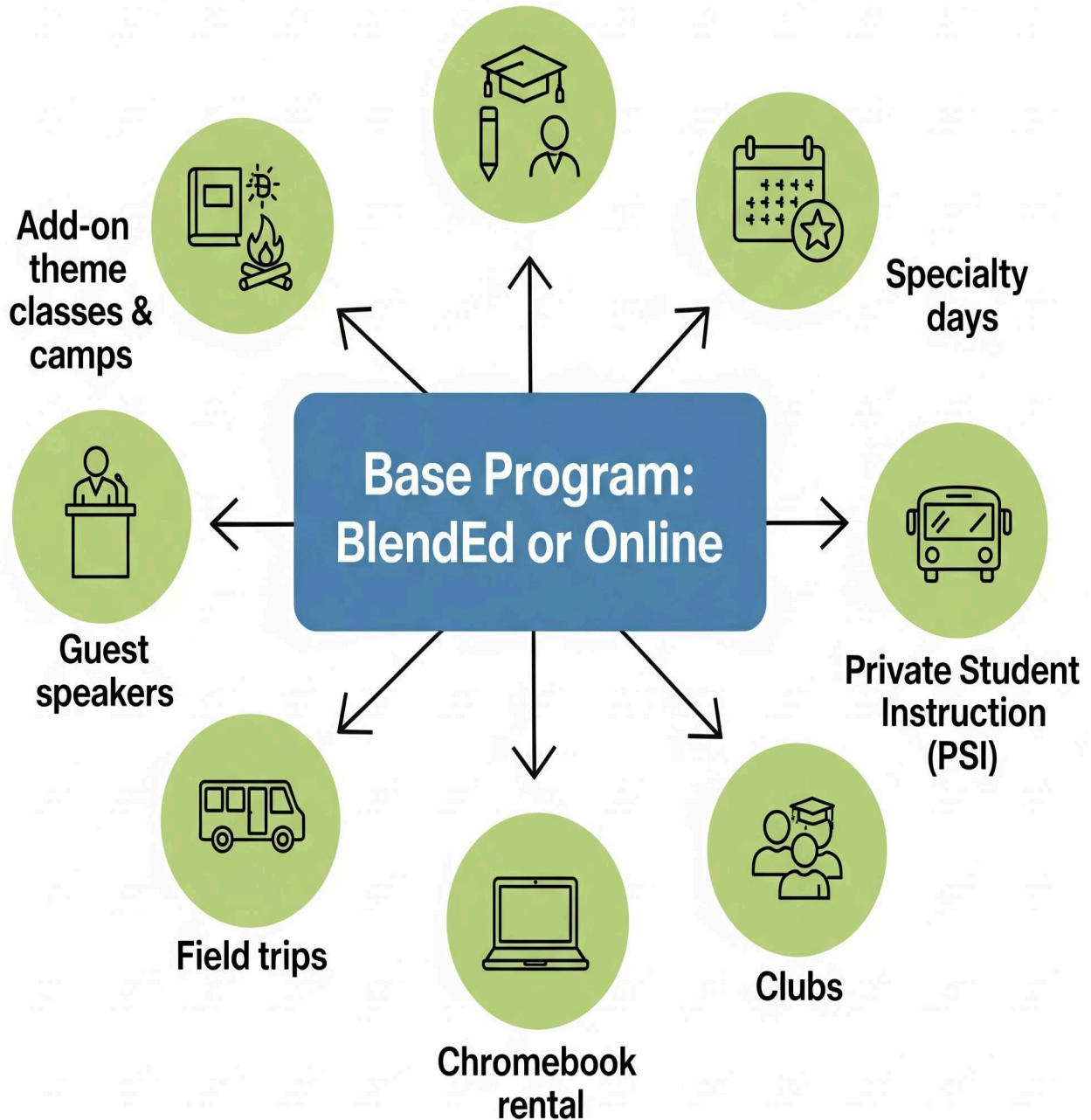
** Transportation Grant depends on Alberta Education and is subject to change

	BlendEd - Base Grades 1 - 6	Online Grades 1 - 6	Home Education Grade K - 12
	Alberta Programs of Study	Alberta Programs of Study	Parent Created Education Plan (Schedule of Outcomes or APS)
Resources	<ul style="list-style-type: none"> Schoology courses (all subjects) print & digital resources (all subjects) 2 off-site trips Google Workspace Account Access to early literacy resources (Gr. 1 & 2 only) PAT prep (grade 6) Flight School (Gr. 3-6) & Social Skills classes as needed PSI - up to ten per year 	<ul style="list-style-type: none"> Schoology courses (all subjects) print & digital resources (all subjects) 2 off-site trips Google Workspace Account Access to early literacy resources (Gr. 1 & 2 only) PAT prep (grade 6) Flight School (Gr. 3-6) & Social Skills class as needed PSI - up to ten per year 	Parent selected & supplied defined on Ed Plan
Assignments & Assessment	<ul style="list-style-type: none"> teacher designed assignments, marking & feedback synchronous & asynchronous lessons diagnostic testing (onsite) access to exam bank, Mathletics, etc report cards and student/parents/teacher meetings 	<ul style="list-style-type: none"> teacher designed assignments, marking & feedback synchronous & asynchronous lessons diagnostic testing (onsite) access to exam bank, Mathletics, etc report cards and student/parents/teacher meetings 	Parent designed & supplied defined on Ed Plan PATS Available
Mandatory Attendance	<ul style="list-style-type: none"> 3 Creation Studio Themes (18 full days): T or TH 1 Camp (3 full days): T or TH Foundation Workshops Celebrations - days vary PAT's - Gr 6 	<ul style="list-style-type: none"> Foundation workshops PAT's - Gr 6 	2 meetings / year
Optional Classes & Events *FEES APPLY*	<ul style="list-style-type: none"> Add-on theme classes (\$360) & camps (\$180) Specialty days, guest speakers, field trips, clubs Chromebook rental (\$99/yr) 	<ul style="list-style-type: none"> Add-on theme classes & camps Specialty days, guest speakers, field trips, clubs Chromebook rental (\$99/yr) 	<ul style="list-style-type: none"> Add-on theme classes & camps Specialty days, guest speakers, field trips, clubs Chromebook rental (\$99/yr)
Fees / Tuition	<ul style="list-style-type: none"> \$50 or \$75 application fee \$250 - Resource fee \$95.00 Supply fee \$105 - Lunch Supervision \$2000 Mild/ Moderate fee** 	<ul style="list-style-type: none"> \$50 or \$75 application fee \$250 - Resource fee 	<ul style="list-style-type: none"> \$50 or \$75 application fee
Grant	<ul style="list-style-type: none"> Transportation Grant* - \$504 	<ul style="list-style-type: none"> None 	<ul style="list-style-type: none"> Resource Grant* - \$901.00 (Kinder \$450.50*)

* Subject to Change by Alberta Education

**Applies on if student is mild/moderate special needs

CREATE A CUSTOM PROGRAM FOR YOUR CHILD



Online and Home Education families can add-on too!
Additional add-ons are available throughout the year via <https://bookwhen.com/calgary>

PARENT'S ROLE

A parent has the prior right to choose the kind of education that shall be provided to the parent's child, and as a partner in education, has the responsibility to:

- act as the primary guide and decision-maker with respect to the child's education,
- take an active role in the child's educational success including assisting and supporting,
- ensure that the child attends to their studies regularly,
- ensure that the parent's conduct contributes to a welcoming, caring, respectful and safe learning environment, including assisting with the enforcement of AB Education's mobile device policy, other school policies, rules or procedures,
- cooperate and collaborate with school staff to support the delivery of specialized supports and services to the child,
- encourage, foster and advance collaborative, positive and respectful relationships with teachers, principals, other school staff and professionals providing supports and services in the school, and
- engage in the child's school community.

Parents are:

- The first and ongoing educators of their children! We are here to help support you and your students on their educational journey.
- The parent of your student! We honor your right to make decisions concerning your student so long as it does not harm or interfere with another student, parent or staff member.
- Required to notify the school if their student is unable to attend a registered event or class and to keep sick children at home.

As a Phoenix BlendEd Parent, my responsibilities are to:

- supervise at-home learning and support the learning process,
- communicate with teacher(s) and other members of the school,
- provide a personal email address at the time of registration,
- promptly respond to email and phone calls from Phoenix staff,
- access Schoology regularly to view school information, course marks and progress reports,
- assume responsibility for all materials and resources issued,
- ensure resources are returned as required,
- Cover the costs incurred above and beyond the program budget.

There is an annual \$250.00 resource usage fee - all non-consumable resources must be returned at the end of the year. Any resources that are not returned at the end of the year (June 20), parents will be charged replacement costs.

STUDENT'S ROLE

A student, as a partner in education, has the responsibility to:

- attend their school (structured learning environment) regularly and punctually,
- be ready to learn and actively engage in and diligently pursue the student's education,
- ensure that the student's conduct contributes to a welcoming, caring, respectful and safe learning environment that respects diversity, the rights of others and fosters a sense of belonging,
- refrain from, report and not tolerate bullying or bullying behaviour directed toward others in the school, whether or not it occurs within the school building, during the school day or by electronic means,
- comply with the rules of the school and the policies of the board, including the use of personal mobile devices during instructional time,
- cooperate with everyone authorized by the board to provide education programs and other services,
- be accountable to the student's teachers and other school staff for the student's conduct, and positively contribute to the student's school and community.

Students need to:

- Work hard and participate fully.
- Advise the school of special circumstances or changes in regular routines; of any allergies, learning disabilities or medical conditions. (You need to keep reminding us! Additionally, we cannot administer medication so if parents leave the building, please make sure you have your life-saving EpiPen or inhalers, etc. with you and that you can self-administer!)
- Assist in classes and at events as need be – this includes set-up, cleaning and take-down of classrooms.
- Read your student handbook and be familiar with our policies, rules and procedures. They apply to everyone. Please do not ask us to make exceptions. Everyone here is special! 😊

As a Phoenix Student, my responsibilities are to:

- communicate with my teacher in all subject areas on a regular basis,
- attend scheduled sessions / classes regularly whether online or onsite,
- utilize a work schedule that reflects the time (daily and weekly) committed to academic studies,
- promptly respond to email and phone calls from Phoenix,
- ask for help from teacher when I need it,
- use Schoology when I have questions,
- communicate with Phoenix's Help Desk if there are technology concerns,
- complete assigned work, follow teacher directions and meet deadlines,
- return resources upon completion of your courses, but no later than June 20
- access Schoology regularly to view school information, course marks and progress reports,
- write final exams, as required, in all core subjects and PATs in grade 6 and 9.

TEACHER'S ROLE

Our mission is to provide unique learning opportunities for families so that each young person may develop into a life-long learner and active responsible global citizen.

In our unique “BlendEd” school-directed program, your teacher will:

- develop the Learning Pathways for each student,
- create opportunities for students to enhance their learning,
- be accessible to students/parents for instruction for a minimum of 950 hours each year,
- deliver, monitor and evaluate coursework that meets the requirements of the APS,
- respond to all work submitted in a timely fashion,
- Assist the Principal by ensuring that the student’s conduct contributes to a welcoming, caring, respectful and safe learning environment that respects diversity, the rights of others and fosters a sense of belonging, including enforcement of the school policies, rules and procedures,
- provide students and their parents with meaningful feedback regarding student progress,
- help students prepare for final and provincial diploma examinations,
- communicate progress and achievement through reports cards, email, schoology and/or by phone,
- maintain communication with students and parents through email, text, schoology, fax, phone, online sessions or in person,
- respond to all phone and email messages within two working days of receiving them,
- prepare report cards,
- inform students and parents of school events and other news.

Reading Tip: If you are considering a Home Education program, please also refer to the Alberta Education Guide to Home Education for the roles and responsibilities of the student, parent and supervising school authority.

SPECIAL NEEDS

In accordance with the School Act, school-directed students with special education needs are entitled to have access to an education program. Students with severe special education needs will receive adapted or modified programming (IPP) in addition to the modifications that our flexible program model affords. Mild/Moderate blended students do not get an IPP. Their needs are accommodated with our program model. Different levels of schoology courses and resources, adapted assignments by the teacher, support through Reading Chicks or other support programs. Online and Home Education students do not qualify for additional educational support, but may still benefit from our experience and assistance in modifying their education plan.

Please note: Phoenix may not be the appropriate learning environment for all students and as such, we may be unable to accommodate your student’s complex learning needs and supports. Please see our Admissions Policy.

HOW IT ALL WORKS TOGETHER



HOW PLACEMENT WORKS

Placement days are August 24th - 31st. Please be aware, new students require an interview with the teacher or Principal and testing to determine working levels for language arts and math. This may be done prior to placement week. (August 4th - 21st) Please note that if your new student has not completed the placement assessment, they will not receive their resource box at the orientation.

HOW ORIENTATION WEEK WORKS

Orientation week is SEPTEMBER 1-3 and is the time where **you and your kiddos** will:

- Meet your teachers
- Get your supplies and resource boxes
- Get an overview of the grade
- Find out how to use our various programs and apps
- Learn how the school works AND . . . meet the other kids!

Orientation Sessions - Please sign up for your grade level. There will be two workshops - one for parents and one for kids - FREE

Lunch and Learn - Bring your own lunch and learn all about Schoology and the Google Educational Suite. (Parents - supervision will be provided for the kids while you munch and learn) - FREE

Workshops - See the details under parent support.

Date	Day	Time	Event	FEE
Sept 1	T	12:30 PM - 2:00 PM	Grades 1, 2, 3 Orientation	FREE
Sept 1	T	2:00 PM - 4:00 PM	Schoology and Gmail	FREE
Sept 2	W	10:00 AM - 11:30 AM	Grades 4,5,6 Orientation	FREE
Sept 2	W	11:30 AM - 1:30 PM	Lunch and Learn (Schoology and Gmail)	FREE
Sept 2	W	1:30 PM - 3:00 PM	Grades 7, 8, 9 Orientation	FREE
Sept 3	TH	10:00 AM - 11:30 AM	Home Education Orientation	FREE
Sept 3	TH	12:30 - 2:00 PM	Severe Special Needs Orientation	FREE

Please note: Special needs families need to come to TWO orientation sessions

HOW PARENT SUPPORT & COFFEE WORKS

Throughout the year, we offer a variety of parent workshops, tea on the lawn and online coffee dates. Please watch your weekly updates for information and reminders. Please be sure to register for these events in Bookwhen - <https://bookwhen.com/calgary>

HOW MONDAY WORKS

Mondays are for Extras & EXTRA Supports. This includes programs such as Flight School and Reading Chicks. We also offer a variety of supports such as OT, PT and Speech therapy. Private schools are not obligated to admit every student who seeks admission. However, once accepted, we have an obligation to provide access to appropriate programming based on the student's needs, our model, and the level of service we have the ability to provide. **Phoenix does not receive special needs funding for mild, moderate, online, or home education students.** Some BlendEd students qualify for **severe** special needs funding based on eligibility that is determined by Alberta Education. School authorities may use the funding they receive based on the needs of these students within their school community.

Flight School

Is our remedial program designed to assist our special needs students as they soar to Brilliance. This program is by teacher-invite only, and is taught by the creative and clever staff from Renfrew Support Services. It runs MONDAYS for 16 WEEKS. This program is offered ONSITE only.

Reading Chicks Program

Does your student find reading difficult? Would they benefit from direct and intensive instruction with our Reading Coach? Reading Chicks is designed to assist struggling readers in overcoming hurdles and closing the gap between grade and reading level. Our Reading Chicks Program offers evidence-based instruction customized to each student's needs. It runs MONDAYS for 14 weeks for 45 minutes in a small group setting (maximum 4 students of similar reading levels). Students can register for both sessions - FALL and/ or WINTER. Group availability depends on applicants of the same age and literacy needs. Assessments must be completed by the teacher prior to placement. This program is offered ONSITE only.

OT or Speech Sessions

Some students may benefit from small group or private sessions with the Occupational or Speech Therapist. The Care Coordinator will be in touch with parents as needed. One of the unique programs we offer is the OT GAMES CLUB.

Clubs & Family Hosted Celebrations

Phoenix parents and students can start clubs or host cultural celebrations! Clubs are held on Monday afternoons for usually 6-9 weeks. Celebrations are dependent on other instructional programming requirements. The school will supply a teacher-supervisor and space. We will also take registration through bookwhen. Fees may be charged to off-set these expenses.

- **Step 1:** Send a proposal of with details such as who, what, when and why to info@phoenixfoundation.ca
- **Step 2:** Work with the Head of School to affirm the details and then Phoenix will promote and take registrations
- **Step 3:** After the club or event, meet with the Head of School to complete a post-club follow-up.

HOW TUES/ THURS WORK

On Tuesdays and Thursdays we offer **THEMED CLASSES** or **CAMPS** or **OUTDOOR WEEKS**. Registration is required for all classes, camps and activities and events.

1. THEMES CLASSES

Phoenix's unique "IN-THE-SCENE" education concept makes learning come alive! Our creative team carefully constructs huge scenes in our 3000-square-foot Studio in which students of all ages can explore ideas, master APS outcomes and make memories that will last a lifetime!

Our themes for this year will be:

- **Scotland**
- **Ancient Greece**
- **First Peoples**
- **Disasters and Resiliency**



1. **Theme** is divided into 6 weeks of thematic programming ending with a Learning Celebration.
2. **The day** is divided into 2 lessons, each with a different curriculum focus. **Each lesson** is based on the Alberta Program of Studies and is 2.5 hours. They include a variety of learning styles and activities. For example, a class may include reading background information, answering comprehension questions, playing a related game, doing some math questions and creating a relevant science project or craft. Lunch is 30 mins and supervised by the school.
3. **Material** is presented at the advertised grade level of the class. Please register your child according to their **WORKING** grade level, not their registered level. **(Ask your teacher for assistance if you do not know what their working grade level is.)** If the class is too hard, they will be frustrated and if it is too easy, they will be bored.

WHAT EACH SUBJECT IS ABOUT!

We use the Alberta Program of Studies to plan each and every class. Classes for Grades 1-6 are thematic and include a variety of subjects, presentation styles and materials.

Literacy / Language Arts (LA) . . .

Literacy is viewing, representing, listening, speaking, reading and writing to construct and create meaning.

Social Studies (SOC) . . .

Students will build an understanding of Canada's multicultural, inclusive democracy and develop their own active, responsible global citizenship by exploring other countries – their food, culture, stories and way of life.

Science (SC) . . .

Science is the pursuit to understand the relationships within the living and nonliving universe. It means exploring and experimenting!

Numeracy / Math (M) . . .

Students will use inquiry, observation and math to analyze, measure and predict outcomes and solutions to real world problems.

Wellness (WELL) . . .

Wellness is about understanding the role of physical activity, nutrition and personal care in contributing to optimal health. Students will be learning about the nutrition, production and processing of food. They may do some cooking depending on the topic. Classes include a mix of gym time, kitchen time and classroom time.

Fine Arts (FA) . . .

Fine Arts is a way of giving expression to celebrating or challenging norms, traditions and values through visual art, drama and music.

Holidays . . .

We love to celebrate the various holidays. (Mostly the commercial ones that involve food!) Activities often include dress-up, food, music, crafts and more.

2. CAMPS

Camps are loads of fun! They are high interest topics that engage learners, expand their skill sets and challenge them to try something new! (They are also pieces of the curriculum not covered in the themes.)

Research says that kids learn better in small groups where learning is tied in with real life and is messy! Camps take place in the various small classrooms on the Phoenix campus. This allows our team of amazing artists the chance to take down the studio and construct the next new exciting theme.

Please note camps are three weeks in length and run from 9:30 AM - 3:00 PM.

CAMP SCHEDULE

- **Fall Camp Weeks - Oct 26 - Nov 13**
- **Winter Camp Weeks - Jan 11 - Jan 29**
- **Spring Camp Weeks - March 22 - April 9**

3. OUTDOOR EDUCATION WEEKS

This is a three week period of programming dedicated to outdoor activities. The camps may include orienteering, survival skills, field trips, camping, laser tag, mini golf, or a special onsite guest.

- **Outdoor Weeks - May 31 - June 18**



HOW FRIDAYS WORK

Each day at Phoenix is different! Some components are virtual, and some are on-site. Mondays are extras support, Tuesdays have pre-K to Grade 6 kids onsite, Wednesdays are dedicated to our teens, Thursdays have the pre-K to Grade 6 kids back onsite and Fridays . . . well, that is the day we fit in “all the other stuff” such as:

- Feasts or Learning Celebrations
- Guest Speakers (Mad Science, Reptile Guy etc)
- Workshops for students or parents
- Field trips and more!

Everything is posted in our school calendar. Registration is required.

Date	Day	Time	Event	Description
Oct 16	F	10:30 - 12:00 PM	Scottish Learning Celebration	Celebrate your student's journey through the Highlands and Lowlands at our Scottish Learning Celebration!
Jan 8	F	10:30 - 12:00 PM	Ancient Greece Learning Celebration	Celebrate your student's journey through the world of Gods, heroes, and democracy at our Ancient Greece Learning Celebration!
Mar 19	F	10:30 - 12:00 PM	First People Learning Celebration	Celebrate your student's journey through the history and culture of the First Peoples at our First People Learning Celebration!
May 28	F	10:30 - 12:00 PM	Disasters Learning Celebration	Celebrate your student's journey through the disasters of history and the resilience of the human spirit at our Learning Celebration.
June 18	F	1:00 PM	Year End Ceremony	Awards, acknowledgements, certificates and more. Celebrate the end of the year with us!

HOW FUN DAYS WORK

Fun Days are meant to enhance our learning! They create community and delight learners! Some of them are silly, some of them solemn, some are free, and some have fees. There may also be other FUN days booked throughout the year so watch your email for these surprise days!

Date	Event		Date	Event		Date	Event
Aug 6	Annual Chili Cook Off		Oct 30	Halloween Party		Jan 27	Family Literacy Day
Aug 13	Kites and Crafts		Nov 10	Remembrance Day Ceremony		Feb 1-5	Ketchup Week
Aug 20	Bumblin Bees		Nov 20	Great Grill Cheese Fundraiser		Feb 5	Hot Dog Roast
Aug 27	Ice Cream Day		Dec 11	Mittens and More		Feb 23-25	Pink Shirt Week
Sept 30	Count Day - Picture Day - Resource Sale		Dec 18	Christmas Party		Mar 17	St. Patty's Day Party
Sept 30	Truth and Rec (OPEN)		Dec 21- Jan 1	Winter Break		Apr 22	Earth Day
Oct 19-23	Fall Break		MORE will be announced				

HOW FOUNDATION WORKSHOPS WORK

Foundation workshops are series of workshops taught over the course of the year where the teacher:

- **Focuses on Essential Skills :** These workshops focus on fundamental skills that are crucial for success in language arts and math. This could include things like:
 - **Language Arts:** phonemic awareness, phonics, reading fluency, vocabulary development, grammar, writing basics
 - **Math:** number sense, basic operations (addition, subtraction, multiplication, division), fractions, measurement, geometry
- **Teaches Building Blocks:** They aim to solidify these foundational concepts, providing students with the building blocks they need to tackle more complex material in later grades.
- **Applies Targeted Support:** The workshops may be designed to provide extra support to students who need additional help in these areas.

Benefits:

- **Stronger Foundation:** Students gain a solid understanding of fundamental concepts.
- **Increased Confidence:** By mastering these essential skills, students gain confidence in their abilities.
- **Improved Performance:** This can lead to improved performance in language arts and math classes.
- **Early Intervention:** The workshops can help identify and address any learning gaps early on.

The teacher will email out the details and agenda prior to each Foundation workshop. Foundations may be online or in-person and the format will be determined by the teacher.

Language Arts	Math
Grades 1-6	Grades 1-6
● Oct 30, 2026	● Nov 20, 2026
● Dec 11, 2026	● Jan 22, 2027
● Feb 12, 2027	● March 12, 2027
● April 23, 2027	● May 21, 2027

HOW PSI - Private Student Instruction- WORKS

The purpose of private student instruction (PSI) is to:

- Provide differentiated instruction
- Address deficiencies or areas of weakness
- Create a safe and caring learning environment
- Provide individual learning opportunities for student (1:1)

BlendEd and Online students can book up to ten (10) private 30 min sessions with their teacher each year to get extra help and assistance. Book these through your teacher’s appointment link

HOW SHOW & SHARE EVENTS WORK

Show & Share (Grades 2-6) - 2 per year

These are set out in the program guide each year and are in the school calendar. If you have not added them to your personal calendar and need assistance to do this, please see the front desk. Our students participate in TWO special show and share events each year:

1. Science Show and Share:

- **Show:** The topic is chosen by the teacher and published through a Schoology assignment; This could be something like:
 - A model of the solar system they built
 - A poster of a plant or animal they researched
- **Share:** Students will present information based on their project and Schoology assignment . They will practice public speaking and audience etiquette.

2. Social Studies Show and Share:

- **Show:** This time, the topic chosen by the teacher will be related to social studies and again published through a Schoology assignment; This could be something like:
 - A family heirloom or object that tells a story about their history
 - Something that represents their culture or a different culture they're learning about
- **Share:** Students talk about their project, sharing interesting facts and stories.

Why these focused Show and Shares are great:

- **Deeper Learning:** By focusing on specific subjects, students can connect their learning to real-world objects and experiences.
- **Increased Engagement:** It adds excitement to learning about science and social studies!
- **Skill-Building:** Students develop research, organization, and presentation skills within a specific subject area. It also allows students to practice public speaking skills.

Your teacher will email specific details prior to the event. Grade 1 students do an online presentation. This allows them to feel a little more comfortable as they start to develop their public speaking skills.

Science	Social
<ul style="list-style-type: none">● Grade 2-6 <p>DECEMBER 4 10:00 AM</p>	<ul style="list-style-type: none">● Grade 2-6 <p>FEBRUARY 26 10:00 AM</p>

HOW FOOD & SUPERVISION WORKS

No parents will be allowed onsite unless they are required by an IPP for their severe special needs student. All classes will be full day and considered a cohort. As such we will provide out-of-class supervision for 15 minutes prior to class and after class for pick up and drop-off. Students in elementary grades require lunch supervision. The fee for all students is \$30 for the 6 week block of classes and \$15 for camps or \$5.00 per day. (Tax receipts provided twice per year.)

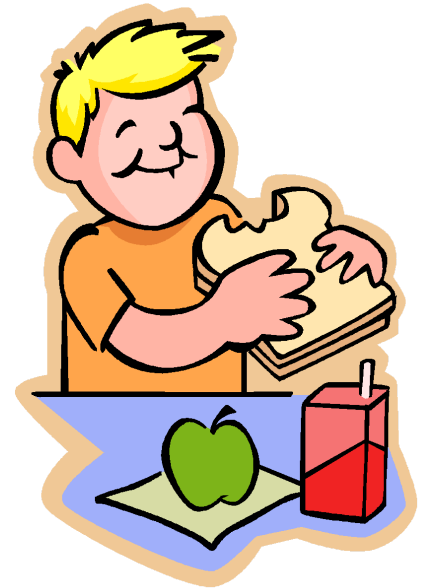
Your child will need indoor shoes as many of our programs may include gym time. Make sure you send a lunch, water bottle and a snack. No refrigeration or microwave is available for students. Please do not bring peanut or nut products. All items should be clearly marked with your child's name. There is no sharing of food.

Improper student behavior will not be tolerated and parents will be called to return immediately if necessary to pick up their child.

We are not a special needs school. If your child requires additional assistance beyond what Phoenix provides, you will be asked to stay in the class as your child's aide.

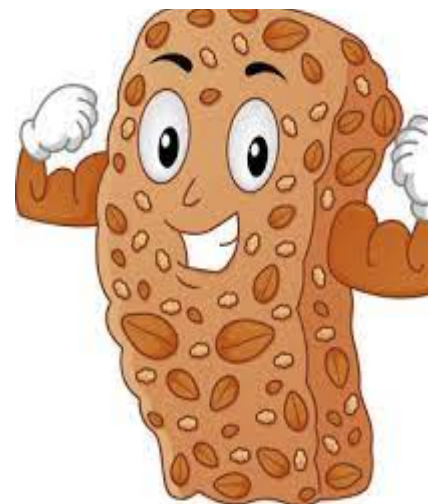
Please note, we are not an allergen-free zone! If your child has a severe allergy, you are required to send their epi-pen and teach them to self administer. We also ask that you remind and keep on reminding teachers of your child's allergies as many of our classes include food items, especially the Wellness classes. If your student cannot self-administer medication, you will be asked to remain onsite with your student for all activities, events, camps and classes.

Prompt pickup is required at the end of all programs. If you are late, please call to inform us so that your child does not worry. **Please note:** Babysitting charges (\$5.00) will apply for every 15 minutes, or part thereof after the stated program end time, that you are late. This will be charged to your credit card.



SNACK SHACK PROGRAM

Phoenix offers a snack shack all day long for anyone who gets hungry at school. This program is funded by donations from the Food Bank and families like YOU!



WELCOME TO THEME #1

SCOTLAND



This theme runs from Sept. 8 - Oct 16
Our Learning Celebration will be Oct. 16

SCOTLAND



TUESDAYS

Theme 1: Scotland- OVERVIEW			
Tuesday- All day \$360 including lunch supervision			
9:30	GRADE 1-2	GRADE 3-4	GRADE 5-6
Sep 8	Where is Scotland?	Plaid and Weaving	Where is Scotland?
Sep 15	Highlands and Lowlands	Scottish Sayings	Highlands and Lowlands
Sep 22	Music and Dance	Castles in Scotland	Music and Dance
Sep 29	The Falkirk Wheel	Traditions and Celebrations	The Falkirk Wheel
Oct 6	Famous Scots	The Thistle and Its Legend	Famous Scots
Oct 13	Architecture and Skylines	Legends of the Loch	Architecture and Skylines
12:00 - 12:30	LUNCH		
Sep 8	Plaid and Weaving	Where is Scotland?	Plaid and Weaving
Sep 15	Scottish Sayings	Highlands and Lowlands	Scottish Sayings
Sep 22	Castles in Scotland	Music and Dance	Castles in Scotland
Sep 29	Traditions and Celebrations	The Falkirk Wheel	Traditions and Celebrations
Oct 6	The Thistle and Its Legend	Famous Scots	The Thistle and Its Legend
Oct 13	Legends of the Loch	Architecture and Skylines	Legends of the Loch

SCOTLAND



THURSDAYS

Theme 1: Scotland- OVERVIEW			
Thursday- All day \$360 including lunch supervision			
9:30 AM	GRADE 1-2	GRADE 3-4	GRADE 5-6
Sep 10	Highland Cows and Wildlife	Skara Brae	Highland Cows and Wildlife
Sep 17	The Romans in Scotland	Scots & First Nations	The Romans in Scotland
Sep 24	Highland Games	Scottish Foods	Highland Games
Oct 1	Famous Scottish Inventors	Mary, Queen of Scots	Famous Scottish Inventors
Oct 8	Where Golf Started	The Unicorn	Where Golf Started
Oct 15	Scottish Myth and Legends	Edinburgh	Scottish Myth and Legends
12:00 PM	LUNCH		
Sep 10	Skara Brae	Highland Cows and Wildlife	Skara Brae
Sep 17	Scots & First Nations	The Romans in Scotland	Scots & First Nations
Sep 24	Scottish Foods	Highland Games	Scottish Foods
Oct 1	Mary, Queen of Scots	Famous Scottish Inventors	Mary, Queen of Scots
Oct 8	The Unicorn	Where Golf Started	The Unicorn
Oct 15	Edinburgh	Scottish Myth and Legends	Edinburgh

FALL CAMPS

TUESDAYS

FALL CAMPS (3 Weeks) All day \$180 including lunch supervision			
Dates	Oct 27 - Nov 10		
	Grade 1-2	Grade 3-4	Grade 5-6
9:30 AM	The Story of the Seasons	The Story of Alberta	Run, Jump and Stretch
12:00	Lunch		
12:30 PM	Math Monsters	Run, Jump and Stretch	Fall Harvest

THURSDAYS

FALL CAMPS (3 Weeks) All day \$180 includes lunch supervision			
Dates	Oct 9 - Nov 12		
	Grade 1-2	Grade 3-4	Grade 5-6
9:30 AM	Fall Harvest	Math Games	The Story of Canada
12:00	Lunch		
12:30 PM	Run, Jump and Stretch	Fall Harvest	Fraction Action

WELCOME TO THEME #2

ANCIENT GREECE



This theme runs from Nov. 16 - Jan 8
Our Learning Celebration will be Jan. 8

ANCIENT GREECE

TUESDAYS

Theme 2: Greece - OVERVIEW			
Tuesday- All day \$360 including lunch supervision			
9:30 AM	GRADE 1-2	GRADE 3-4	GRADE 5-6
Nov 17	Where is Greece?	The Mediterranean Sea	Where is Greece?
Nov 24	Athens and Sparta	The Mighty Olive	Athens and Sparta
Dec 1	The Parthenon	Gods and Goddesses	The Parthenon
Dec 8	The Greek Alphabet	Minotaur and Medusa	The Greek Alphabet
Dec 15	Ancient Theatre	Pegasus and Centaurs	Ancient Theatre
Jan 5	The First Olympics	Trojan Horses	The First Olympics
12:00 PM	LUNCH		
Nov 17	The Mediterranean Sea	Where is Greece?	The Mediterranean Sea
Nov 24	The Mighty Olive	Athens and Sparta	The Mighty Olive
Dec 1	Gods and Goddesses	The Parthenon	Gods and Goddesses
Dec 8	Minotaur and Medusa	The Greek Alphabet	Minotaur and Medusa
Dec 15	Pegasus and Centaurs	Ancient Theatre	Pegasus and Centaurs
Jan 5	Trojan Horses	The First Olympics	Trojan Horses

ANCIENT GREECE

THURSDAYS

Theme 2: Greece - OVERVIEW			
Thursday- All day \$360 including lunch supervision			
9:30 AM	GRADE 1-2	GRADE 3-4	GRADE 5-6
Nov 19	Greece Today	The “Evil” Eye	Greece Today
Nov 26	Temples and Columns	Greek Games and Worry Stones	Temples and Columns
Dec 3	Statues	Archimedes	Statues
Dec 10	Greek Pottery	Alexander the Great	Greek Pottery
Dec 17	Greek Food	Armour and Weapons	Greek Food
Jan 7	Greek Music and Dance	Odysseus	Greek Music and Dance
12:00 PM	LUNCH		
Nov 19	The “Evil” Eye	Greece Today	The “Evil” Eye
Nov 26	Greek Games and Worry Stones	Temples and Columns	Greek Games and Worry Stones
Dec 3	Archimedes	Statues	Archimedes
Dec 10	Alexander the Great	Greek Pottery	Alexander the Great
Dec 17	Armour and Weapons	Greek Food	Armour and Weapons
Jan 7	Odysseus	Greek Music and Dance	Odysseus

NEW YEAR'S CAMPS

TUESDAYS

NEW YEAR'S CAMPS (3 Weeks) All day \$180 including lunch supervision			
Dates	Jan 12- 26		
	Grade 1-2	Grade 3-4	Grade 5-6
9:30 AM	Mad Scientist	Novel Study	Mad Scientist
12:00	Lunch		
12:30 PM	Novel Study	Mad Scientist	<i>Novel Study</i>

THURSDAYS

NEW YEAR'S CAMPS (3 Weeks) All day \$165 including lunch supervision			
Dates	Jan 14 - 28		
	Grade 1-2	Grade 3-4	Grade 5-6
9:30 AM	Technology and Tools	Making Music	Technology and Tools
12:00	Lunch		
12:30 PM	<i>Making Music</i>	Technology and Tools	Making Music

WELCOME TO THEME #3

FIRST PEOPLES



This theme runs from Feb. 8 - Mar 19

Our Learning Celebration will be Mar. 19

FIRST PEOPLES

TUESDAYS - UNDER CONSTRUCTION

Theme 3: First People - OVERVIEW			
Thursday- All day \$360 including lunch supervision			
9:30 AM	GRADE 1-2	GRADE 3-4	GRADE 5-6
Feb 9			
Feb 16			
Feb 23			
Mar 2			
Mar 9			
Mar 16			
12:00 PM			
Feb 9			
Feb 16			
Feb 23			
Mar 2			
Mar 9			
Mar 16			

FIRST PEOPLES

THURSDAYS

Theme 3: First Peoples - OVERVIEW			
Thursday- All day \$360 including lunch supervision			
9:30 AM	GRADE 1-2	GRADE 3-4	GRADE 5-6
Feb 11			
Feb 18			
Feb 25			
Mar 4			
Mar 11			
Mar 18			
12:00 PM			
Feb 11			
Feb 18			
Feb 25			
Mar 4			
Mar 11			
Mar 18			

SPRING CAMPS

TUESDAYS

SPRING CAMPS (3 Weeks) All day \$180 including lunch supervision.			
Dates	March 23 - April 6		
	Grade 1-2	Grade 3-4	Grade 5-6
9:30 AM	Creature Care	Foods Class	Games & Critical Thinking
12:00	Lunch		
12:30 PM	Foods Class	Creature Care	Building & Design

THURSDAY

SPRING Camps (3 Weeks) All day \$180 includes lunch supervision			
Dates	March 25 - April 8		
	Grade 1-2	Grade 3-4	Grade 5-6
9:30 AM	Games	Building & Design	Creature Care
12:00	Lunch		
12:30 PM	Building & Design	Games & Problem Solving	Foods Class

Remember registration is required for all classes, events and activities. You can add-on and enhance your base program by going to <https://bookwhen.com/calgary>

WELCOME TO THEME #3

DISASTERS AND RESILIENCY



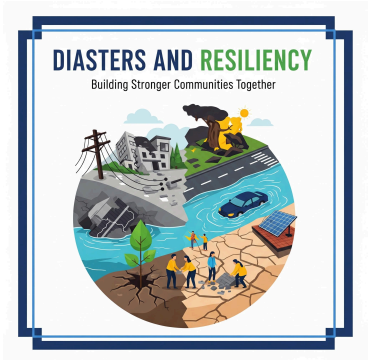
This theme runs from April 19 - May 28

Our Learning Celebration will be May 28th.

DIASTERS & RESILIENCY

TUESDAYS - UNDER CONSTRUCTION

Theme 4: Disasters & Resiliency - OVERVIEW			
Thursday- All day \$360 including lunch supervision			
9:30 AM	GRADE 1-2	GRADE 3-4	GRADE 5-6
12:00 PM			



DIASTERS & RESILIENCY

THURSDAYS

Theme 4: Disasters & Resiliency - OVERVIEW			
Thursday- All day \$360 including lunch supervision			
9:30 PM	GRADE 1-2	GRADE 3-4	GRADE 5-6
12:00 PM			

WELCOME TO

OUTDOOR ED WEEKS

May 31 - June 18

We will be out doing things in the community - we hope to do Drumheller, the Telus Spark Center, the Zoo, Camp Chestermere and sooooo much more. Please stay tuned.

**EMPOWERING STUDENTS THROUGH EXPLORATION:
The Importance of Field Trips**

- 1. ENHANCED RETENTION**
Connecting abstract concepts to concepts to memorable, physical experiences improves long-term memory.
- 2. HANDS-ON LEARNING**
Moving beyond textbooks to experience real-world applications.
- 3. SPARKING CURIOSITY & PASSION**
Exposure to new ideas and careers, encouraging lifelong interests.
- 4. CULTURAL & HISTORICAL APPRECIATION**
Broadens perspectives deepens understanding of focal heritage and diverse cultures.
- 5. DEVELOPING SOCIAL SKILLS**
Fosters teamwork, communication, and problem-solving outside the traditional classroom.

CREATE MEMORABLE JOURNEYS FOR YOUNG MINDS

GOING TO WORKSHOPS

GOING TO HIGH SCHOOL - JAN 6@3:30 PM

Is your student going to High School next year? Phoenix only goes to Grade 9. We are happy to work with families to help you find the right placement for your student. Come, eat some pizza and chat with our CARE Coordinator and our Junior High Teachers to find out more about the options available for High School next year.

GOING TO GRADE 1 - MARCH 16 @2:00 PM

Is your child moving from Kindergarten into grade one next year? Come and meet our grade one teacher and find out about the options Phoenix has to offer and how each program works.

GOING TO JUNIOR HIGH - MARCH 25 @2:00 PM

Prepare your Grade 6 student for the next step in their educational journey! Come and meet our Junior High teachers and find out about the options Phoenix has to offer and how our program works.

Registration for the 2026-2027 school year opens APRIL 1, 2027!

YEAR END CEREMONY

Join us on Friday

June 18, 2027

Invite your friends and family.

Time: 10:00 am – 12:00 pm

FREE

**Kinder certificates, graduate
acknowledgement
and special awards**

REGISTRATION REQUIRED!



IF THERE IS A DISCIPLINE PROBLEM



The instructor will **make your child aware** of the problem or issue and indicate what they should be doing differently. They will be given one additional warning.

After that, as you the parent are the primary and on-going educator of your child, **your assistance will be required**. Your child may be allowed to continue to participate in the class with your assistance.

If the behavior issue continues, you will be asked to **remove your child** from the class. We will not tolerate rude, disrespectful or unmanageable behavior.

If there is a persistent problem, your Teacher or the Principal will help implement strategies to help correct the behavior. Once corrected, your child may attend classes again at that time if appropriate.

In the Event of a Fire or Emergency

There are current fire extinguishers located throughout the building. Most rooms have at least one. Fire drills are conducted randomly throughout the year regardless of weather. We generally do not do school-wide drills, but rather, our fire procedure is reviewed with students each and every class, as students all have a varied schedule. Your children know they are to stay with their instructor, follow the instructor out to the muster point and to wait for you there.



Parents: ALL VISITORS MUST sign in at the front desk. This means parents, grandparents and siblings. Otherwise we may not know you are onsite during an emergency. If you are asked to leave the building in the event of a fire or Emergency, please go quickly to the nearest exit. These are marked on placards throughout the building. Take the children who are in your direct supervision and go outside to the muster point. We will meet you there.

Muster point: Is the grass on the far side of the parking lot. Students will exit with their teacher and stay there until released into the care of their parents. We will ask you to initial the class list to release the student under our supervision into your care.

Part of our safety plan is YOU! If you see a hazard, a stranger or are worried about something, please come and tell us!

Need a Band-Aid?

All staff have their First Aid certificates, so they can help! There are plenty of First Aid kits in the building – at the front desk, in the kinder room, in the kitchen, in the creation studio, in the gym and in the chopshop area. Plus, instructors have a small kit in their carts, even the field trip backpack has one! I think we have you covered!

ON-SITE FOR THE 2026 SCHOOL YEAR

Allergies

Phoenix CANNOT in any way guarantee that the school is allergen free. Anyone with an anaphylaxis allergy must keep their epi-pen with them. Parents are responsible for informing the school of their student's allergies and medical conditions. We ask that parents do not send common allergens to school.

Arrival and Departure

Drop off from **9:15 - 9:25** Pick-up from **3:05 - 3:15**

In order to minimize congestion at the doorway during pick-up and drop-off, students will use separate entrances. But all meet in the SAFE ZONED AREA for pick up.

For Parking lot drop-off - Vehicles will enter from the 2nd ave entrance (behind the building) and exit using the west lot exit. Staff will supervise the lot during drop-off and pick-up times. Please keep the line moving!

Street parking is also an option, but please **do not** park on the west side of 19th street or on the corner of 19th and 2nd ave. 19th street is busy, has a bus stop and some industrial traffic. We love your kiddos and want them to be safe!

Beginning September 11, parking stalls are reserved for staff, handicap parking and those parents that are assisting their students in class. Parking passes will be issued for these families. The front door will be locked once classes are in session. Please ring the doorbell and someone will assist you.

Bins and Shoes

Phoenix provides bins for students to store their coats and shoes. Bins are located at each entrance. All staff, students and parents require indoor shoes while at Phoenix.

Class & Event Registration

Your program may include some classes and events. Registration is required for all classes, camps and activities. Additional classes, camps and events must be prepaid prior to participation. You may pay by Visa, MasterCard, etransfer, cash, cheque or debit. Any outstanding account balances will be charged to your credit card on file. Registration for classes is done through Bookwhen - <https://bookwhen.com/calgary>. Registration generally closes Friday at 2:00 PM for the next week's classes and activities. Can't make a class, camp or event, please call us to let us know - 403-265-7701. We are required to take attendance. Please see our refund policy below.

Special Circumstances

Students on an IPP may have a modified attendance requirement. This must be discussed with your Teacher.

Class & Event Changes & Refunds

All class & event fees are **non-refundable** and **non-transferrable**. You have **48 hours from the time we receive your registration** to make any changes or to cancel your booking. After 48 hours, you may switch classes or camps once and if there is room, but a \$25.00 fee will apply. There is no refund for missed

class, camps or events. However, if Phoenix cancels the class, camp or activity, we will issue a refund or credit.

Illness at Home

Please continue to be vigilant and screen your child before sending them to school. Students with any symptoms of any communicable illness, such as colds, COVID-19, flu, lice, stomach illness and chicken pox should stay home until they no longer have symptoms.

Illness While at School

Students who feel ill at school need to let their instructor know as soon as they begin to feel ill. School personnel are not permitted to give medication to students. Parents must be available to pick up their student as quickly as possible.

Lunch Supervision

Students in grades K - 6 require lunch supervision. Phoenix provides lunch supervision. The fee for elementary students is \$5 per day that they are registered to attend. Kinder students do not pay a lunch supervision fee. Students must bring all of their own food, including snacks. There is no microwave or fridge for student use.

Parents on-site

Parents are not permitted to stay on-site while their child(ren) is in class. Instead, they will need to drop their child(ren) and pick them up at the designated time. The parking lot has been reconfigured to accommodate a drop-zone and fewer parking stalls. Staff will monitor the parking lot drop-off and pick-up times.

Parents of students on an IPP with a requirement for an aide, or a requirement for a parent to be on-site will be permitted to stay. There will be a designated space in the Learning Commons for these parents. Please do your best to keep younger siblings at home.

Parent Volunteers

We will require parent volunteers for lunch supervision and field trips. There is a Parent Volunteer Handbook and Application.

Personal Mobile Devices

Personal mobile devices (including smartwatches, smartphones, cell phones and headphones etc) will be restricted during instructional time for ECS to Grade 12 students. Students will be required to keep their devices in their backpacks.

Exceptions may be granted for health and medical needs or to support special learning needs. application for exceptions can be made to the principal or equivalent on a case-by-case basis. Phoenix may permit the use of personal mobile devices for educational purposes or other circumstances as determined by the principal or equivalent on a case-by-case basis.

Access to social media platforms such as Facebook, Instagram, etc may be restricted on the school network and devices. Further information regarding the roles and responsibilities of the school, parents and students can be found in the Student Handbook.

Consequences for non-compliance may result in a temporary loss of use and notification of parents.

School Supplies

Phoenix will provide all of the classroom supplies (pencils, crayons, scissors, glue, etc) needed for all classes. Please do not send these supplies from home.

Staying Clean and Healthy

Respiratory etiquette will follow Alberta Health Services guidelines, including encouraging and reminding students to cough and sneeze into their elbows.

Students will be encouraged to sanitize their hands when they enter and exit the building and classrooms

Students need to wash their hands:

- After using the restroom
- Before and after eating
- After sneezing and coughing into their hands

Masks are optional for all staff, parents, volunteers, visitors and students.

Student Attendance - Onsite Classes and Activities

Parents/guardians MUST telephone the school to explain and confirm the reason for a student's absence from onsite classes at 403-265-7701. Office staff arrive at the school by 8:30 a.m. and an answering machine is available.

Supervision of Students

While students are attending classes at Phoenix, they are supervised by Phoenix staff. Lunch supervision is required for students in grade 1 - 6. Fee applies.

Prompt pickup is required at the end of all programs. If you are late, please call to inform us so that your child does not worry. Please note: Babysitting charges (\$5.00) will apply for every 15 minutes, or part thereof after the stated program end time, that you are late. This will be charged to your credit card.

As members of the community, we recognize that we share the space and expect everyone at Phoenix to respect others property, place litter, recycling and compost in the appropriate containers and conduct themselves with courtesy and safety toward others.

Transportation

Phoenix does not provide transportation. Parents are required to transport their students to and from the school and to and from field-trips. There may be a transportation grant available from Alberta Education for parents in the kinder and BlendEd programs. This will be provided to parents in January of each school year. It cannot be applied to your outstanding fees directly.

**We are glad to be a part of your families'
educational journey!**

